

Cats Incredible, Inc.

24th Annual Cat Show
Rollway Roller Rink
South 2nd Road, Hammonton, NJ
2 February 14 & 15, 2009
225 Cats - 8 AB Rings



Closing Date February 9th or When Filled

HHP's Welcome

<p><u>Our Saturday Judges</u></p> <p>Ken Currle Gene Darrah Barbara Sumner Kim Everett-Hirsch</p> <p><u>Our Sunday Judges</u></p> <p>Diana Doernberg Jeri Zottoli Ellyn Honey Sharon Roy</p>	<p>AB AB AB AB</p> <p>AB AB AB AB</p>	<p><i>Show Manager</i> Russell Webb 40 Totowa Road Wayne, NJ 07470 201-294-5094 email: whitewebrex@aol.com</p> <p><i>Assistant Manager</i> David White 40 Totowa Road Wayne, NJ 07470 201-962-5701 email: whitewebrex@aol.com</p>	<p><i>Show Secretary</i> Russell Webb 40 Totowa Road Wayne, NJ 07470 201-294-5094 email: whitewebrex@aol.com</p> <p><i>Vendor Coordinator</i> Carol Schwartz 2179 Fruitville Pike Lancaster, PA 17601 717-569-3934 email: Karol3@comcast.net</p>
--	---	--	--

Entry Clerks: Pam & Gary Huggins, 7828 Citadel Drive, Severn, MD 21144-1512

Phone: 410-551-3242 Fax: 410-519-7159 email: ghuggins@cablespeed.com

Online entries at www.catshows.us

Entry Fees

1st Entry -- \$49 (includes catalog)

2nd Entry -- \$45 (Same Owner)

3rd & Subsequent Entries \$35 (Same Owner)

Double Cage \$25 / Sales cage \$25 (with entry only)

Household Pets \$40

Grooming space \$30 (Limited)

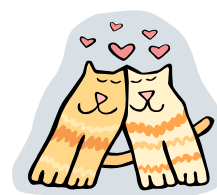
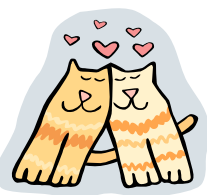
End-of-Row \$15 / Substitution Fee \$15

Return Check fee \$50

No Canadian Checks - Cash at Check-in, please

Make checks payable to: Cats Incredible, Inc.

Unless submitted online, all entries must be submitted on the official CFA entry form.



Starting Times: The show hall will be open at 7:30 AM. All cats must be benched by 9:30 AM or they will be marked absent. Judging will start promptly at 10:00 AM on Saturday; 9:00 AM on Sunday. All entries must remain in show hall until 4:00 PM unless permission to leave is received from the show manager.

Show Hall: Rollway Roller Rink, 131 South 2nd Road, Hammonton, NJ 08037, 609-561-8061. Ample Free parking is available and People Food is available! The facility is heated and/or air conditioned, as appropriate.

http://www.rinktime.com/skating_rinks/nj/rollway_roller_rink_skating_rink_arena_hammonton_nj.cfm

Show Hotel: Econo Lodge Buena 102 Old Tuckahoe Road, Buena, NJ 08310 -- US 40 and SR 54, Buena, New Jersey. 856 697-9000. Hotel is approximately 11 miles from Show hall. Hotel can be booked on line. http://www.econolodge.com/hotel-buena-new_jersey-NJ062

Alternate Hotel: Red Carpet Inn & Suites - 700 S White Horse Pike, Hammonton, NJ 08037 Phone number (609) 704-1000 <http://www.bookroomsnow.com/propinfo.asp?HIPropCode=RNJHA>

Show Supplies: Litter will be supplied. Please bring your own litter pan, water bowl, and cat food. Cages are approximately 22x22x22.

CFA RULES: All entries should be inoculated against Feline Enteritis, Rhinotracheitis, and Calici Virus and tested for FeLV by a licensed vet. Cats should be free from mites, fleas, and fungus. CFA show rules require your cat's front and back claws be clipped. Our show is held under the auspices of the Cat Fanciers Association. CFA Show rules will be strictly enforced. Copies of the show rules are available for \$5.00 from CFA P.O. Box 1005 Manasquan, NJ 08736. All championship, premiership and registered kittens will be scored for CFA National and Regional Awards. The club will exercise due care but will not be liable for any loss, damage, or injury. Cats may not be left in the show hall after published show hours and no watchman will be provided during the hours the show is not open.

Directions to Show Hall

131 South 2nd Road, Hammonton, NJ 08037

From the West: PA Turnpike to 1-76 (Schuylkill Expressway). Follow signs for Center City to Benjamin Franklin Bridge.

From Benjamin Franklin Bridge: Follow RT 70 East to RT 73 South. Take RT 73 South past the Knights Inn on your left - road will fork. Stay to the left and take exit for the Atlantic City Expressway. Continue straight thru the town of Folsom to traffic light at RT 54. Turn left onto RT 54 North toward Hammonton. Go under the overpass for the Atlantic City Expressway to "2nd Road". Turn right onto "2nd Road". Show hall is first building on the left. Park on the side of the building away from the main entrance door.

From Walt Whitman Bridge: Follow RT 42 East toward Atlantic City Expressway. Take Expressway to Hammonton/RT 54 North exit. Take RT 54 North to the first road, "2nd Road". Turn right onto "2nd Road". Show hall is first building on the left. Park on the side of the building away from the main entrance door.

From Commodore Barry Bridge: Follow RT 322 East to RT 54 North exit. Go North on 54 to "2nd Road" "Turn right onto "2nd Road". Show hall is first building on the left. Park on the side of the building away from the main entrance door.

From North of Philadelphia: Take Tacony Palmyra Bridge, RT 73 South past the Knights Inn on your left - road will fork. Stay to the left and take exit for the Atlantic City Expressway. Continue straight thru the town of Folsom to traffic light at RT 54. Turn left onto RT 54 North toward Hammonton. Go under the overpass for the Atlantic City Expressway to "2nd Road". Turn right onto "2nd Road". Show hall is first building on the left. Park on the side of the building away from the main entrance door.

From New York/Northern NJ: NJ Turnpike to Exit 7. At Exit 7, take left fork after tollbooth to RT 206 South. Follow 206 South for approx 40 miles to RT 30 (landmark Silver Coin diner, far left corner). Cross over RT 30 and go one block to yield sign. Turn left and continue through town of Hammonton 2.7 miles to "2nd Road". Turn left onto "2nd Road". Show hall is first building on the left. Park on the side of the building away from the main entrance door.

From the South: Delaware Memorial Bridge to RT 40 East (Atlantic City). Follow RT 40 East to RT 54 North. Turn left onto RT 54 North toward Hammonton. Go under the overpass for the Atlantic City Expressway to "2nd Road". Turn right onto "2nd Road". Show hall is first building on the left. Park on the side of the building away from the main entrance door.